

# IMPORTANT SAFETY INSTRUCTIONS

When using electrical appliances, especially when children are present, basic safety precautions should always be followed, including the following:

## FOR HOUSEHOLD USE ONLY

READ ALL INSTRUCTIONS BEFORE USING—SAVE THESE INSTRUCTIONS

Do not use this appliance near bathtubs, showers, basins or other vessels containing water.

**⚠ WARNING—To reduce the risk of death by electric shock:**

1. Always unplug the unit immediately after using.
2. Do not use while bathing.
3. Do not place or store appliance where it can fall or be pulled into a bath or sink.
4. Do not place in or drop into water or other liquid.
5. If an appliance falls into water, unplug immediately before removing the unit. Do not reach into the water.

**⚠ WARNING—To reduce the risk of burns, electrocution, fire or injury to persons:**

6. An appliance should never be left unattended when plugged in. When the appliance is used in a bathroom, unplug it after use since the proximity of water presents a hazard even when the appliance is switched off.
7. If the supply cord is damaged, it must be replaced by the manufacturer, its service agent or similarly qualified persons in order to avoid a hazard.
8. This appliance is not intended for use by persons (including children) with reduced physical, sensory or mental capabilities, or lack of experience and knowledge, unless they have been given supervision or instruction concerning use of the appliance by a person responsible for their safety.
9. Children should be supervised to ensure that they do not play with the appliance.
10. Use this appliance only for its intended use as described in this manual.
11. Only the use of original Shark attachments for this product are allowed for the safe use of the product.
12. Never operate this appliance if it has a damaged cord or plug, if it is not working properly or if it has been dropped, damaged or dropped into water, contact Shark customer service center.

13. Keep the cord away from heated surfaces. Do not wrap the cord around the appliance.
14. Never block the air openings of the appliance or place it on a soft surface, such as a bed or sofa, where the air openings may be blocked. Keep the air openings free of lint, hair and the like.
15. Never use on someone who is sleeping.
16. Never drop or insert any object into any opening.
17. Do not use outdoors or operate where aerosol (spray) products are being used or where oxygen is being administered.
18. Do not use an extension cord with this appliance.
19. Do not direct hot air toward eyes or other heat-sensitive areas.
20. Attachments may be hot during use. Allow them to cool before handling.
21. Do not place appliance on any surface while it is operating.
22. While using the appliance, keep your hair away from the air inlets.
23. Do not operate with a voltage converter.
24. Do not use this appliance on hair extensions or wigs unless recommended by the hair extension or wig manufacturer.
25. If hair styling product is being used in conjunction with this appliance please read and follow all of the hair styling product safety warnings and instructions before use.
26. Cleaning and maintenance should not be done by children without supervision.
27. For additional protection, the installation of a residual current device (RCD) having a rated residual operating current not exceeding 30 Ma is advisable in the electrical circuit supplying the bathroom. Ask your installer for advice.

# SAVE THESE INSTRUCTIONS

## TECHNICAL SPECIFICATIONS

Voltage: 220-240V 50-60Hz | Power: 1700W

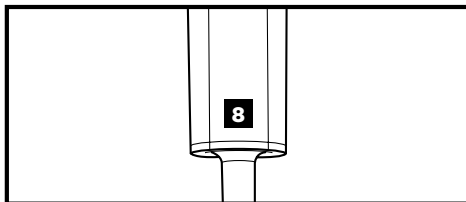
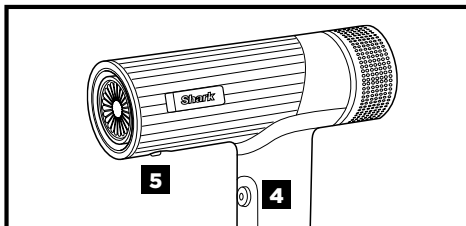
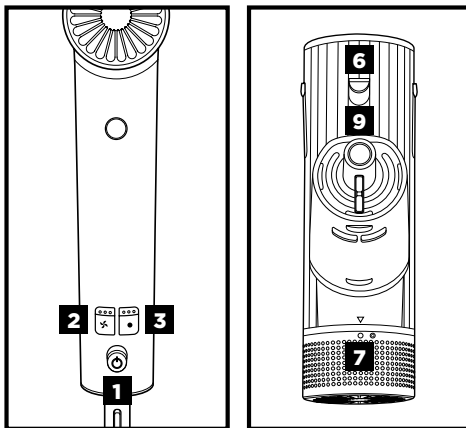
## OPERATING INSTRUCTIONS

1. Slide the power button to turn the dryer on and off.
2. Press the airflow button to choose a low, medium, or high airflow.
3. Press the temperature button to choose no heat, or low, medium, or high temperature.
4. Press and hold the Cool Shot button for a cool burst of air to set your style.
5. To attach any accessories included with your model, press them into the nozzle outlet. You will know they are properly attached when they click in place.
6. To remove an accessory, slide the lock down and lift the accessory off the nozzle by holding onto the touchpoints identified in your Styling Guide.
7. To remove the filter cover, twist it off the back of the unit counterclockwise. To attach the filter cover, twist it back onto the back of the unit clockwise.
8. Rating label location.

**For further operating instructions, please consult the Styling Guide.**

### Storage, Cord Safety, and Maintenance/Cleaning:

- Ensure the cord is not knotted, twisted, or wrapped around any nearby objects when in use.
- Store the unit in a dry location away from water and other heat sources. Store brush accessories so the bristles are not touching any surfaces to help prevent bristle damage.
- Clean the filter on the back of the unit monthly. To clean the filter, first twist the filter cover counterclockwise off the back of the unit, then use a new toothbrush to brush off any dust or debris on the filter. Once the filter is clean, twist the filter and filter cover clockwise back onto the back of the unit.
- Remove any hair on the brush accessories after every use to help maintain performance.



## TWO (2) YEAR LIMITED GUARANTEE

The warranty commences on the date of purchase and expires at the end of the two-year period. In the unlikely event of a defect due to faulty materials or workmanship within the guarantee period we will replace the defective/faulty part with a new product, free of charge, or if the unit is deemed defective/faulty we replace the unit with an equivalent or upgraded model, at our discretion.

For warranty claims, you will need to submit a proof of purchase in the form of a valid receipt that displays date and place of purchase.

### Your warranty is subject to the following conditions

- DO NOT operate the appliance with a damaged plug or cord, or if the unit has been dropped, damaged or dropped in water.
- To avoid the risk of electric shock, do not disassemble or attempt to repair the appliance on your own. If the supply cord is damaged, it must be replaced by a qualified electrician to avoid a hazard. Incorrect re-assembly or repair can cause a risk of electric shock or injury to persons when the appliance is used.
- The item has not been misused, abused, neglected, altered, modified or repaired by anyone.
- The item has been subjected to fair wear and tear.
- The item has not been used for trade, professional or hire purposes.
- The item has not sustained damage through foreign objects, substances or accident

### Customer costs within warranty

The customer is responsible for any inwards freight charge to return a product for warranty if requested, and outward freight charge for warranty parts and or

replacement unit.

### Who is covered?

This warranty applies only to the original purchaser, who bought the product from an authorised retailer and may not be transferred. Proof of purchase is required.

### What is not covered?

- Filters and brush rolls
- Accessories supplied with the item.
- Components that are subject to natural wear and tear caused by normal use in accordance with operating instructions.
- Unauthorised/improper maintenance/handling or overload is excluded from this warranty.
- Accidental damage
- Damage as a result of use not in accordance with the rating plate
- Removal of blockages. If a blockage does occur please refer to the trouble shooting guide within your Shark Operating manual
- Use of parts and accessories that are not genuine Shark components

# TROUBLESHOOTING & ERROR CODES

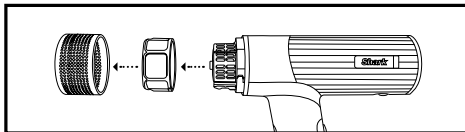
## MAINTENANCE/CLEANING

### Reduction in airflow.

A change in airflow or air power, airflow blockages, and/or visible buildup on the inlet at the back of the unit could indicate your unit needs to be cleaned. To maintain performance, clean the filter at the back of the unit every month, using a new toothbrush.

### Removing the Filter

1. Turn off the unit and unplug it. Rotate the filter cover on the back of the unit counterclockwise, then pull it off. Then rotate the filter counterclockwise and pull it off.



### Cleaning the Filter

1. Soak the filter in warm, soapy water for at least 30 minutes.
2. Wipe down the back of the unit with a dry microfibre cloth or a new toothbrush to remove the debris.
3. After 30 minutes, remove the filter from the water and rinse it thoroughly under a tap.

4. Pat the filter dry with a microfibre cloth. Let the filter air-dry completely for up to 24 hours before reinstalling.
5. To reinstall the filter, reinsert it and rotate it clockwise. Then align the filter cover and rotate it clockwise until it fits securely.

## OVERHEATING

### Hair dryer is overheating or shuts off.

This unit is equipped with a temperature-protective thermostat. If for some reason your hair dryer overheats, the thermostat will automatically turn the unit off. To prevent power-down recurrence, unplug the hair dryer and set it aside to cool, or press the Cool Shot button during use. Overheating may result if the unit is powered on for a long duration. Overheating can also indicate a blockage or dust buildup. To prevent overheating, clean the filter at the back of the unit every month, using a new toothbrush. Make sure you are not covering the filter with your hand when operating the unit, as this could also cause overheating. If overheating continues to occur, contact Customer Service at **AUS: +61 2 8801 7666 | NZ: +64 800 112 660**.

### Overheating Error Code



If you are experiencing a different error code, contact Customer Service at **AUS: +61 2 8801 7666 | NZ: +64 800 112 660**

## Mann&Noble Pty Ltd

Building D, 33 Quarry Road  
Erskine Park, NSW, Australia, 2759

AUS: +61 2 8801 7666  
NZ: +64 800 112 660

[www.sharkbeauty.com.au](http://www.sharkbeauty.com.au)  
[www.sharkbeauty.co.nz](http://www.sharkbeauty.co.nz)



E4156