

# Shark ULTRACYCLONE™

## CORDLESS HAND VAC

CH950ANZ



### IMPORTANT SAFETY INSTRUCTIONS - FOR HOUSEHOLD USE ONLY READ CAREFULLY BEFORE USE - SAVE THESE INSTRUCTIONS

#### ⚠ WARNING

To reduce the risk of injury, fire, electric shock, and property damage resulting from improper use of the appliance, carefully observe the following instructions. This unit contains electrical connections and moving parts that potentially present risk to the user.

#### POWER SUPPLY, CHARGING DOCK, AND VACUUM CONTAIN ELECTRICAL CONNECTIONS:

- 1 There are **NO** serviceable parts.
- 2 **DO NOT** use to vacuum any liquids.
- 3 **DO NOT** immerse in water or other liquids.
- 4 If vacuum is damaged, discontinue use.
- 5 To avoid fire, explosion, or injury, inspect vacuum and charging dock for any damage before use. **DO NOT** use damaged vacuum or charging dock.
- 6 **DO NOT** use outdoors or on wet surfaces. Use only on dry surfaces.
- 7 If vacuum cleaner is not working as it should, or has been dropped, damaged, left outdoors, or immersed in water, return it to SharkNinja for examination, repair, or adjustment.
- 8 **DO NOT** handle charger or vacuum cleaner with wet hands.
- 9 **DO NOT** leave vacuum cleaner unattended while powered on.
- 10 Keep vacuum away from heated surfaces.
- 11 Always turn off vacuum before connecting charging dock.
- 12 Use only Shark® chargers and batteries. Other types of batteries may burst, causing injury and damage.
- 13 Use charging dock on flat and stable surfaces only.
- 14 **DO NOT** incinerate appliance, even if it is severely damaged, as lithium-ion battery may explode in a fire.

#### GENERAL USE

- 15 **DO NOT** carry the charger by the cord or pull to disconnect from a socket; instead grasp the plug and pull to disconnect.
- 16 Keep charger cord away from heated surfaces.
- 17 Use only as described in this manual.
- 18 Keep your work area well lit.
- 19 To avoid unintentional starting, always turn off the vacuum cleaner before picking it up or carrying it, and before attaching or detaching the charger, dust cup, filter, or any accessories.
- 20 **DO NOT** put any objects into openings.
- 21 **DO NOT** use if any opening is blocked; keep free of dust, lint, hair, or anything that may reduce airflow.
- 22 **IMPORTANT:** This appliance is not intended for use by persons (including children) with reduced physical, sensory or mental capabilities, or lack of experience and knowledge, unless they have been given supervision or instruction concerning the use of the appliance by a person responsible for their safety.
- 23 **DO NOT** use without dust cup and filter in place.

- 24 **DO NOT** use if airflow is restricted; if the air paths become blocked, turn off the vacuum cleaner. Clear all obstructions and power on again.
- 25 Keep nozzle away from hair, face, fingers, uncovered feet, or loose clothing.
- 26 Only use manufacturer's recommended attachments.
- 27 **DO NOT** charge at temperatures below 10°C (50°F) or above 40°C (104°F). Charging improperly or at temperatures outside of the specified range may damage the battery and increase the risk of fire.
- 28 Store the appliance indoors. **DO NOT** use or store it below 3°C (37.4°F). Ensure the appliance is at room temperature before operating.

#### DUST CUP/FILTERS/ACCESSORIES

Before turning on the vacuum:

- 29 Make sure dust cup and filter are in place after routine maintenance.
- 30 Make sure accessories are free of blockages and keep openings away from face and body.
- 31 Use only Shark® brand filters and accessories. Using other brands will void warranty.

#### GENERAL CLEANING

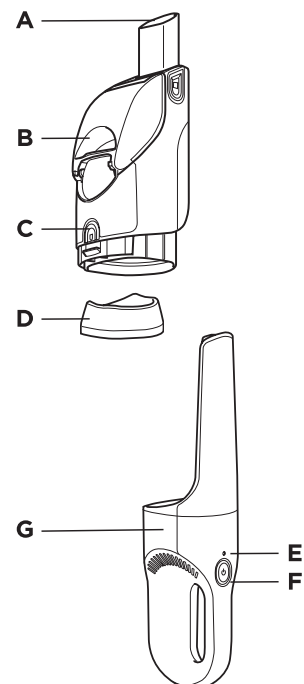
- 32 **DO NOT** vacuum up hard or sharp objects such as glass, nails, screws, or coins that could damage the vacuum cleaner.
- 33 **DO NOT** vacuum up drywall dust, fireplace ash, or embers.
- 34 **DO NOT** use as an attachment to power tools for dust collection.
- 35 **DO NOT** vacuum up smoking or burning objects such as hot coals, cigarette butts, or matches.
- 36 **DO NOT** vacuum up flammable or combustible materials (e.g., lighter fluid, gasoline, or kerosene) or use vacuum in areas where they may be present.
- 37 **DO NOT** vacuum up toxic solutions (e.g., chlorine bleach, ammonia, or drain cleaner).
- 38 **DO NOT** use in an enclosed space where vapours are present from paint, paint thinner, moth-proofing substances, flammable dust, or other explosive or toxic materials.
- 39 **DO NOT** immerse vacuum cleaner in water or other liquids.
- 40 Use extra care when cleaning on stairs.

#### LITHIUM-ION BATTERY

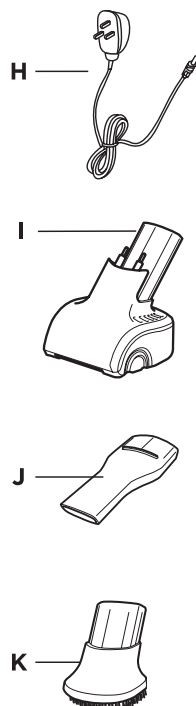
- 41 The battery is the power source for the appliance. **DO NOT** carry the appliance with your finger on the power button. **DO NOT** charge appliance with the power on.
- 42 Use only E-TEK Electronic Manufactory Ltd ZD012A133075BS charger or Dongguan Dongkun Power Technology Co. Ltd DK12-133075A-B charger. Use of an incorrect charger may result in no charging, and/or unsafe conditions.
- 43 Use appliance only with included lithium-ion battery. Use of any other battery may create a risk of injury and fire.
- 44 Under abusive conditions, liquid may be ejected from the battery. Avoid contact with liquid, as it may cause irritation or burns. If contact occurs, flush with water. If liquid contacts eyes, seek medical help.
- 45 Store the appliance indoors. To maintain battery life, **DO NOT** use or store battery at temperatures below 3°C (37.4°F) or above 40°C (104°F).
- 46 **DO NOT** expose appliance to fire or temperature above 130°C (266°F) as it may cause explosion.
- 47 There are **NO** serviceable parts. To ensure safety, **DO NOT** modify or attempt to repair the appliance.

#### GETTING TO KNOW YOUR VACUUM

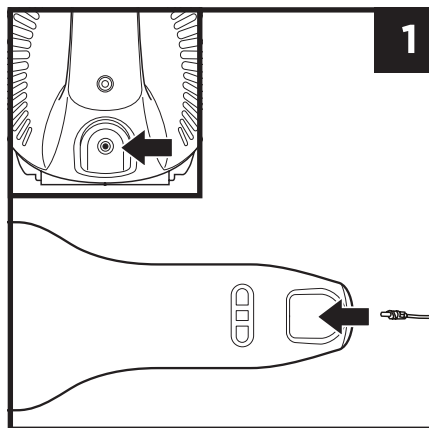
- A Nozzle
- B Dust Cup
- C Dust Cup Release Button
- D Washable Filters + Filter Frame
- E Charging Indicator Light
- F On/Off Switch
- G Vacuum Body



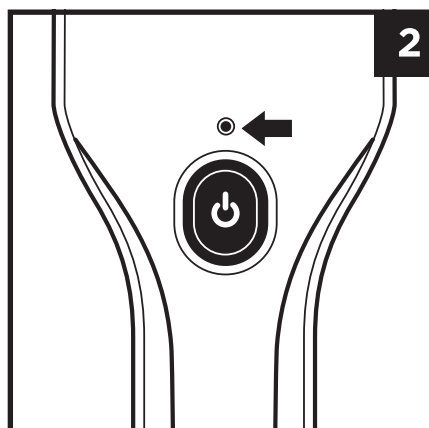
- H Charging Adapter
- I Motorised Pet Tool
- J Crevice Tool
- K Dusting Brush



#### CHARGING YOUR SHARK® VACUUM



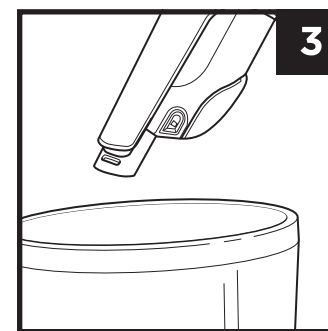
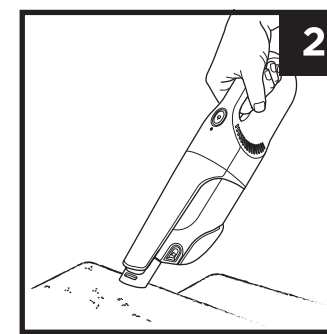
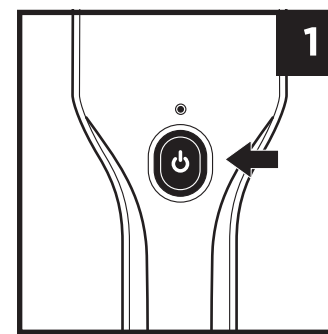
1. Insert the charging adapter plug into the port on the handle.



2. Plug the charging adapter into a socket. The charging indicator light will blink. Light will go out when fully charged.

**NOTE:** Lithium-ion battery takes approximately 4 hours to charge completely.

#### USING YOUR SHARK® VACUUM

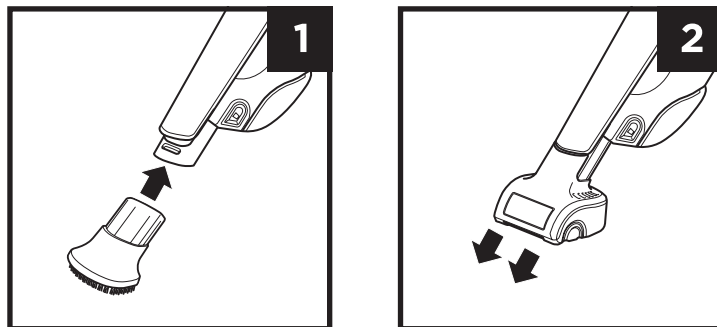


1. Press power button.
2. Run the nozzle over the surface to be cleaned.
3. To empty dust cup, hold your vacuum over a bin.
4. Press the Easy-Empty button to release the debris.

**NOTE:** For maintenance, see reverse side.

## ACCESSORIES

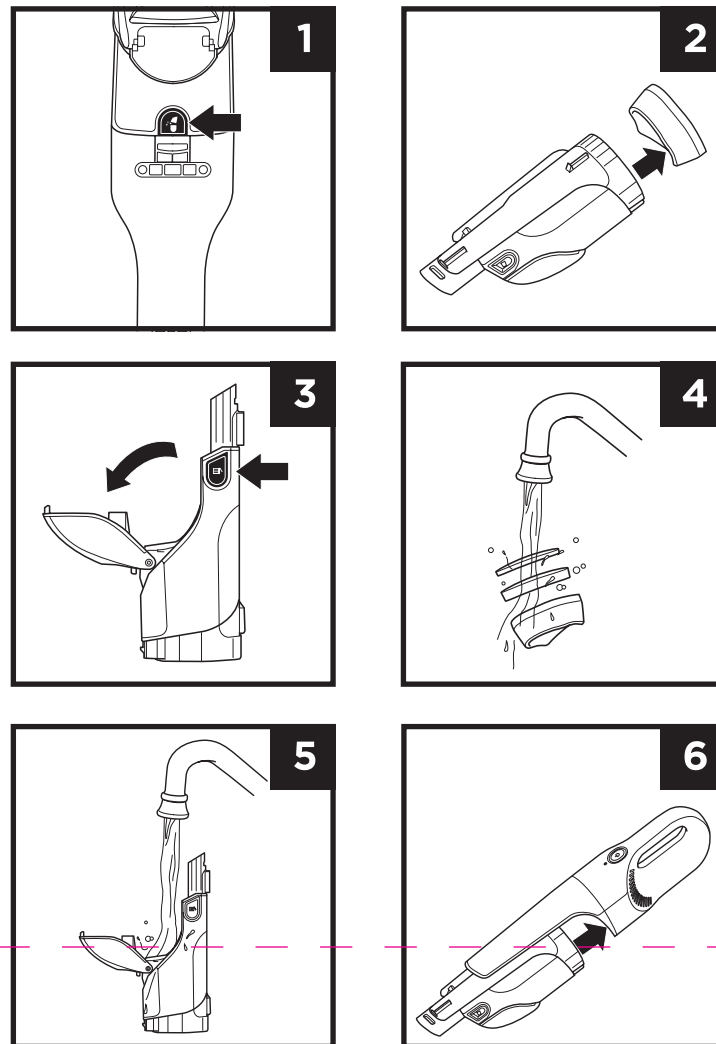
### ATTACHING AND REMOVING



1. To attach an accessory, align it with the nozzle, then slide it on.
2. To remove an accessory, slide it straight off the nozzle.

## MAINTENANCE

### CLEANING THE DUST CUP




1. Press the dust cup release button and pull out the dust cup.
2. Carefully remove the filter frame.
3. To open and empty the dust cup, hold it over the bin, then press the Easy-Empty button (complete instructions on reverse side).
4. Hand-wash the filters in cold water and let them air-dry for at least 24 hours before reinstalling. Air-dry only. **DO NOT** use a hair dryer or clothes dryer.
5. To clean the interior of the dust cup, rinse it with water. Place it on its side with the lid open to air-dry for at least 24 hours before reinstalling.
6. When filters are dry, reinstall them into the filter frame (foam first), reinstall the filter frame into the dust cup, then reattach the dust cup.

**DO NOT** wash any parts or accessories in a dishwasher.

**NOTE:** For replacement filters please visit:  
 AUS: [sharkclean.com.au](http://sharkclean.com.au)  
 NZ: [sharkclean.co.nz](http://sharkclean.co.nz)

### REGISTER YOUR PURCHASE

 [AUS sharkclean.com.au](http://AUS.sharkclean.com.au)  
[NZ sharkclean.co.nz](http://NZ.sharkclean.co.nz)

### TECHNICAL SPECIFICATIONS

Battery Voltage: 10.8V  
 Motor Watts: 100W

E-TEK ZD012A133075BS  
 DS/DK DK12-133075A-B

## ONE (1) YEAR LIMITED REPLACEMENT WARRANTY

For guarantee claims, you will need to submit a proof of purchase in the form of a valid receipt that displays date and place of purchase. This warranty does not replace but is in addition to your statutory rights.

If your product becomes defective due to faulty material or workmanship within a period of 1 year from the date of purchase, we warrant to do the following:

- For New Zealand Consumers: We will replace the defective/faulty part with a new product, free of charge, or if the unit is deemed defective/faulty we replace the unit with an equivalent or upgraded model, at our discretion.
- For Australian Consumers: Our goods come with guarantees that cannot be excluded under the Australian Consumer Law. You are entitled to a replacement or refund for a major failure and for compensation for any other reasonably foreseeable loss or damage. You are also entitled to have the goods repaired or replaced if the goods fail to be of acceptable quality and the failure does not amount to a major failure.

Replacement items will be covered by the limited warranty for the balance of the warranty period from the date of the original purchase.

#### Your warranty is subject to the following conditions

- DO NOT operate the appliance with a damaged plug or cord, or if the unit has been dropped, damaged or dropped in water.
- To avoid the risk of electric shock, do not disassemble or attempt to repair the appliance on your own. If the supply cord is damaged, it must be replaced by a qualified electrician to avoid a hazard. Incorrect re-assembly or repair can cause a risk of electric shock or injury to persons when the appliance is used.
- The item has not been misused, abused, neglected, altered, modified or repaired by anyone.
- The item has been subjected to fair wear and tear.
- The item has not been used for trade, professional or hire purposes.
- The item has not sustained damage through foreign objects, substances or accident

#### Customer costs within warranty

The customer is responsible for any inwards freight charge to return a product for warranty if requested, and outward freight charge for warranty parts and or replacement unit.

#### Who is covered?

This warranty applies only to the original purchaser, who bought the product from an authorised retailer and may not be transferred. Proof of purchase is required.

#### What is not covered?

- Filters and brush rolls
- Accessories supplied with the item.
- Components that are subject to natural wear and tear caused by normal use in accordance with operating instructions.
- Unauthorised/improper maintenance/handling or overload is excluded from this warranty.

## TROUBLESHOOTING

Problem	Solution
<b>The vacuum will not operate</b>	Battery needs to be recharged. Lithium-ion battery takes approximately 4 hours to charge completely. Try using a different socket to charge.
<b>Motorised brush will not work</b>	The metal contact pins on the motorised brush are not in contact with the connector slots on the vacuum. Remove the motorised brush and reinsert firmly into the air-intake nozzle. The motorised brush is blocked. Carefully remove all lint, hair, or other debris from the motorised brush.
<b>Vacuum will not pick up or suction is weak</b>	Dust cup is full. Empty the dust cup. Filters need cleaning or replacement. Clean or replace the filters. Vacuum needs to be recharged.
<b>Dust is escaping from the vacuum</b>	Empty the dust cup. The filters are not installed correctly. Remove filters, then reinstall them. A filter has a hole or a puncture and needs to be replaced. An obstruction may be blocking the dust cup lid, keeping it from closing correctly. Clear any obstructions and ensure the lid is completely closed.

## BATTERY INDICATOR

<b>No Light</b>	Low Battery	Press the power button. If the unit doesn't turn on, then the battery power is too low. Please charge before use.
<b>Slow Flashing Light (while plugged in)</b>	Vacuum Charging	To charge the vacuum, connect charging cord to unit and plug into the socket. The light will fade in and out slowly as the vacuum charges.
<b>Fast Flashing Light (in use)</b>	Low Battery	If the light flashes quickly while the unit is in use, the battery power is low. Recharge the unit.
<b>Solid Light</b>	Fully Charged	When the vacuum is fully charged, the indicator light will illuminate steadily, then turn off. (It takes approximately 4 hours for a full charge).
<b>Five Flashes (after plugging in)</b>	Not Charging	If the wrong charger is used, the light will blink five times and then stop. Use the included charger.

### RECORD THIS INFORMATION

Model Number: \_\_\_\_\_

Date of Purchase: \_\_\_\_\_  
 (Keep receipt)

Store of Purchase: \_\_\_\_\_

## Mann&Noble

#### Proudly distributed by:

**Mann&Noble Pty Ltd**  
 Building D  
 33 Quarry Road  
 Erskine Park NSW, Australia, 2759  
 AUS 02 8801 7666  
 NZ 0800 112 660  
[AUS sharkclean.com.au](http://AUS.sharkclean.com.au)  
[NZ sharkclean.co.nz](http://NZ.sharkclean.co.nz)

Illustrations may differ from actual product. We are constantly striving to improve our products, therefore the specifications contained herein are subject to change without notice.  
 SHARK is a registered trademark of SharkNinja Operating LLC

© 2021 SharkNinja Operating LLC  
 PRINTED IN CHINA

CH950ANZ\_IB\_E\_MP\_Mv1\_210603