

***Shark***

**WANDVAC™  
POWER**

**Cordless Vacuum**

WV406ANZ

**OWNER'S GUIDE**

---



# IMPORTANT SAFETY INSTRUCTIONS

FOR HOUSEHOLD USE ONLY • PLEASE READ ALL INSTRUCTIONS BEFORE USING THIS VACUUM.

If the charging cord plug does not fit fully into the outlet, reverse the plug. If it still does not fit, contact a qualified electrician. **DO NOT** force into outlet or try to modify to fit.

To reduce the risk of shock and unintended operation, turn off power and remove the Li-Ion battery before servicing.

## WARNING

To reduce the risk of fire, electric shock, injury, or property damage:

### POWER SUPPLY, CHARGING DOCK, AND VACUUM CONTAIN ELECTRICAL CONNECTIONS:

1. There are **NO** serviceable parts.
2. **DO NOT** use to vacuum any liquids.
3. **DO NOT** immerse in water or other liquids.
4. If vacuum is damaged, discontinue use.
5. To avoid fire, explosion, or injury, inspect vacuum and charging dock for any damage before use. **DO NOT** use damaged vacuum or charging dock.
6. **DO NOT** use outdoors or on wet surfaces. Use only on dry surfaces.
7. If vacuum cleaner is not working as it should, or has been dropped, damaged, left outdoors, or immersed in water, contact Mann&Noble Customer Service AU 02 8801 7666 NZ 0800 112 660.
8. **DO NOT** handle charger or vacuum cleaner with wet hands.
9. **DO NOT** leave vacuum cleaner unattended while powered on.
10. Keep vacuum away from heated surfaces.
11. Always turn off vacuum before connecting charging dock.
12. Use only Shark® chargers and batteries. Other types of batteries may burst, causing injury and damage.
13. Use charging dock on flat and stable surfaces only.
14. **DO NOT** incinerate appliance, even if it is severely damaged, as lithium-ion battery may explode in a fire.

### GENERAL USE

15. **DO NOT** carry the charger by the cord or yank to disconnect from an outlet; instead grasp the plug and pull to disconnect.
16. Keep charger cord away from heated surfaces.
17. Use only as described in this manual.
18. Keep your work area well lit.
19. To avoid unintentional starting, always turn off the vacuum cleaner before picking it up or carrying it, and before attaching or detaching the charger, dust cup, filter, or any accessories.
20. **DO NOT** put any objects into openings.
21. **DO NOT** use if any opening is blocked; keep free of dust, lint, hair, or anything that may reduce airflow.
22. This vacuum is not a toy, and must not be played with. Children over 8 years old and persons with reduced physical, sensory, or mental capabilities may only use the vacuum with supervision or prior safety instruction and an understanding of the hazards involved. Children may not clean or maintain the vacuum without supervision.
23. **DO NOT** use without dust cup and filter in place.
24. **DO NOT** use if airflow is restricted; if the air paths become blocked, turn off the vacuum cleaner. Clear all obstructions and power on again.
25. Keep nozzle away from hair, face, fingers, uncovered feet, or loose clothing.
26. Only use manufacturer's recommended attachments.

27. **DO NOT** charge at temperatures below 50°F (10°C) or above 104°F (40°C). Charging improperly or at temperatures outside of the specified range may damage the battery and increase the risk of fire.
28. Store the appliance indoors. **DO NOT** use or store it below 37.4°F (3°C). Ensure the appliance is at room temperature before operating.

### DUST CUP/FILTERS/ACCESSORIES

Before turning on the vacuum:

29. Make sure filter is thoroughly dry after routine cleaning.
30. Make sure dust cup and filter are in place after routine maintenance.
31. Make sure accessories are free of blockages and keep openings away from face and body.
32. Use only Shark® brand filters and accessories. Using other brands will void warranty.

### GENERAL CLEANING

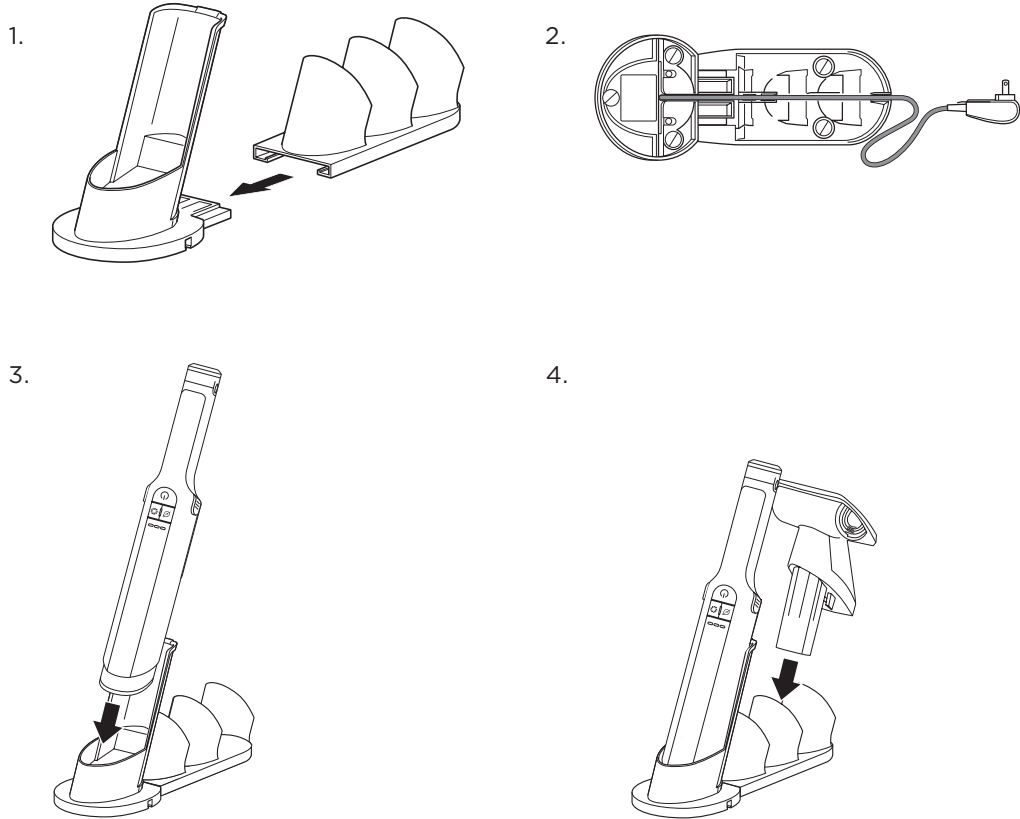
33. **DO NOT** vacuum up hard or sharp objects such as glass, nails, screws, or coins that could damage the vacuum cleaner.
34. **DO NOT** vacuum up drywall dust, fireplace ash, or embers.
35. **DO NOT** use as an attachment to power tools for dust collection.
36. **DO NOT** vacuum up smoking or burning objects such as hot coals, cigarette butts, or matches.
37. **DO NOT** vacuum up flammable or combustible materials (e.g., lighter fluid, gasoline, or kerosene) or use vacuum in areas where they may be present.
38. **DO NOT** vacuum up toxic solutions (e.g., chlorine bleach, ammonia, or drain cleaner).
39. **DO NOT** use in an enclosed space where vapours are present from paint, paint thinner, moth-proofing substances, flammable dust, or other explosive or toxic materials.
40. **DO NOT** immerse vacuum cleaner in water or other liquids.
41. Use extra care when cleaning on stairs.

### LITHIUM-ION BATTERY

42. The battery is the power source for the appliance. **DO NOT** carry the appliance with your finger on the power button. **DO NOT** charge appliance with the power on.
43. Use only the included charging dock to charge. Use of incorrect charger may create a risk of fire.
44. Use appliance only with included lithium-ion battery. Use of any other battery may create a risk of injury and fire.
45. Under abusive conditions, liquid may be ejected from the battery. Avoid contact with liquid, as it may cause irritation or burns. If contact occurs, flush with water. If liquid contacts eyes, seek medical help.
46. Store the appliance indoors. To maintain battery life, **DO NOT** use or store battery at temperatures below 37.4°F (3°C) or above 104°F (40°C).
47. **DO NOT** expose appliance to fire or temperature above 266°F (130°C) as it may cause explosion.
48. There are **NO** serviceable parts. To ensure safety, **DO NOT** modify or attempt to repair the appliance.

## SAVE THESE INSTRUCTIONS

## CHARGING DOCK ASSEMBLY



1. Slide the **Onboard Accessory Storage Attachment** onto the back of the **Charging Dock** until it clicks into place.
  2. Route the cord through the grooves in the bottom of the charging dock and accessory storage attachment, then through the slot in the back.
  3. Slide the vacuum cleaner into the first opening of the charging dock and stand it up.
  4. Slide the accessories into the openings on the onboard accessory storage attachment.
- For proper operation, ensure all components are completely connected and clicked into place.

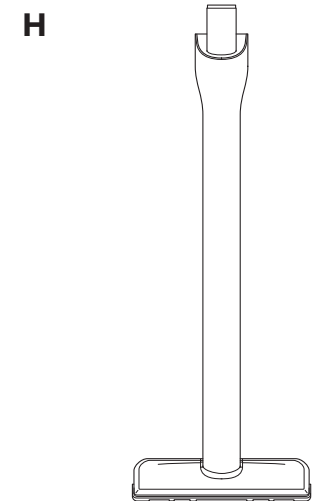
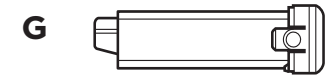
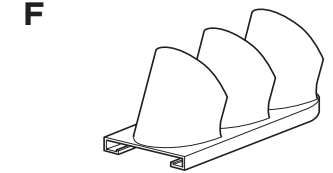
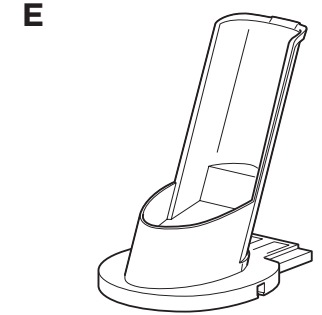
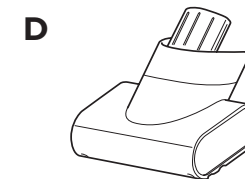
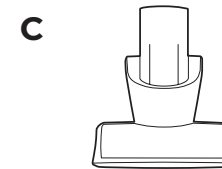
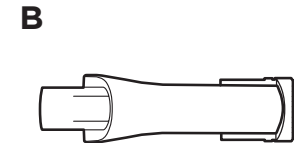
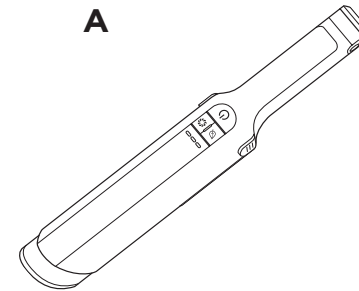
**NOTE:** To ensure the stability of the charging dock, be sure to attach the accessory storage attachment to the charging dock.

**NOTE:** The number of slots on the accessory storage attachment (2 or 3) depends on the product.

**NOTE:** Be sure to put accessories in the designated slots so that the vacuum sits properly in the charging dock. Please see the sticker on the onboard accessory storage attachment for the correct placement of accessories.

## WHAT'S INCLUDED

- A** Handheld Vacuum
- B** Duster Crevice Tool
- C** Upholstery Tool
- D** Motorised Hand Tool
- E** Charging Dock
- F** Onboard Accessory Storage Attachment
- G** Lithium-Ion Battery pre-installed
- H** Floor Nozzle Tool



**NOTE:** Not all accessories come with all units. For a list of the accessories included with this model, see the "Includes" list on the box. To order additional accessories, visit [sharkclean.com.au](http://sharkclean.com.au) or [sharkclean.co.nz](http://sharkclean.co.nz)

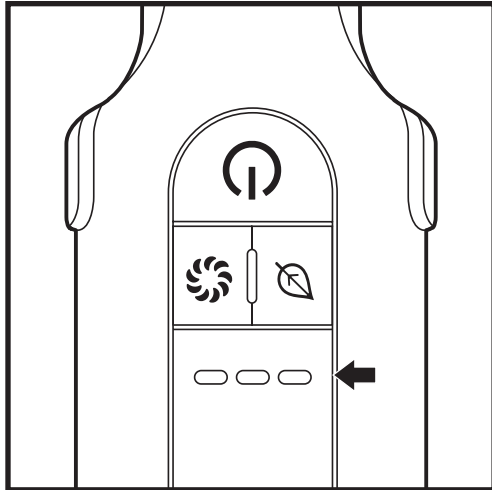
## LI-ION BATTERY

Prior to first use, charge the battery completely. A full charge takes approximately 3.5 hours.

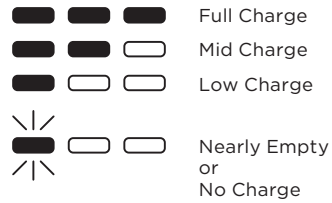
### RUNTIMES PER FULLY CHARGED BATTERY

The maximum operating time with one fully charged battery is 35 minutes.

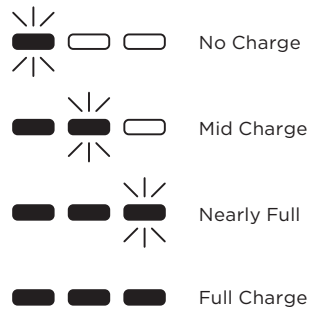
### CHARGING INDICATORS AND LED BATTERY POWER



#### In Use



#### Charging



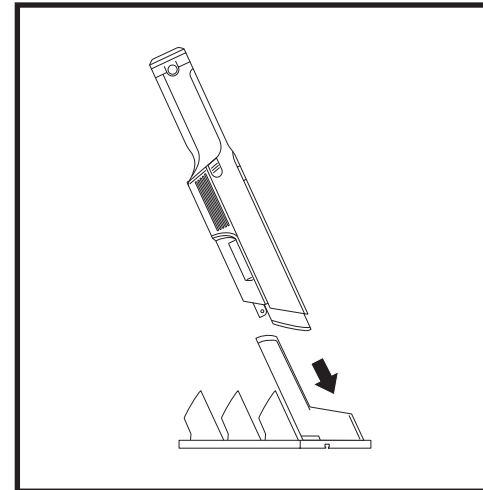
### RECYCLING THE LI-ION BATTERY

When the Shark® Li-ion battery needs to be replaced, dispose of it or recycle it in accordance with local ordinances or regulations. In some areas, it is illegal to place spent lithium-ion batteries in the trash or in a municipal solid waste stream. Return spent batteries to an authorised recycling centre or to the retailer for recycling. Contact your local recycling centre for information on where to drop off the spent battery.

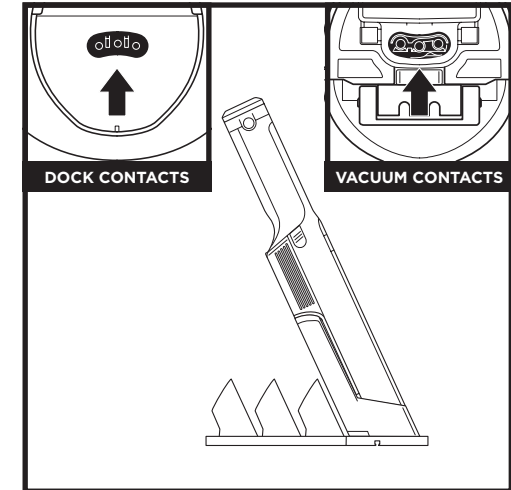
**NOTE:** The Shark battery, like all lithium-ion batteries, will naturally decrease in capacity over time from the 100% capacity of a new battery.

## CHARGING

### CHARGING WHILE IN STORAGE

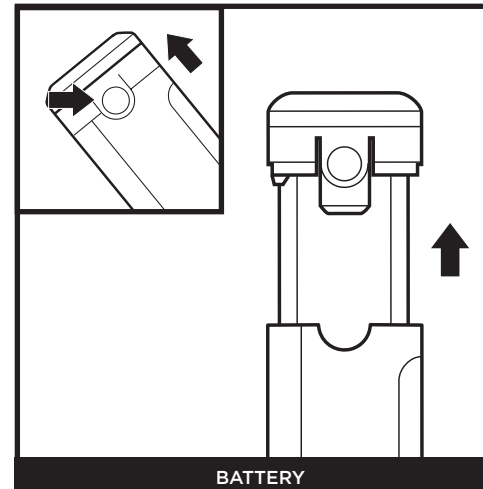


Plug the charging adapter into an outlet on a wall. Charge the unit by sliding it into the charging dock nozzle-first.



Make sure the contacts on the wand are aligned with the contacts on the charging dock. When charging is complete and you need to use the unit again, lift it off the dock plate.

### INSTALLING AND REMOVING THE BATTERY



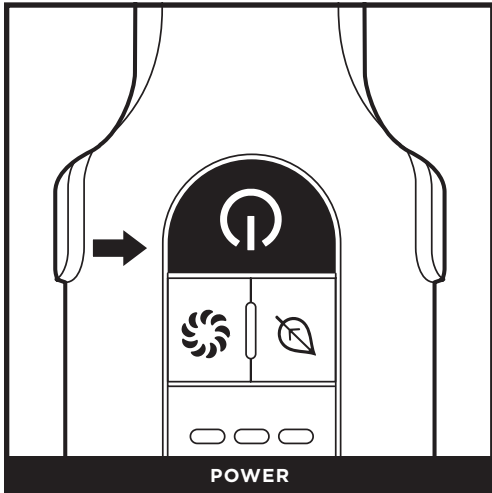
To remove the battery from the hand vacuum, press the release tabs on the battery cap and slide out the battery. To reinstall, slide the battery into the compartment in the handle until it clicks into place.

**NOTE:** When docked properly, the charging lights on the hand vacuum will blink, indicating that charging has begun. When charging is complete, all three indicator lights will remain on for 5 minutes, then shut off.

**NOTE:** The main unit comes with a partial charge. For maximum runtime, charge fully before first use (approximately 3.5 hours). Leaving the unit plugged in will not damage battery life.

## USING YOUR VACUUM

### CONTROLS



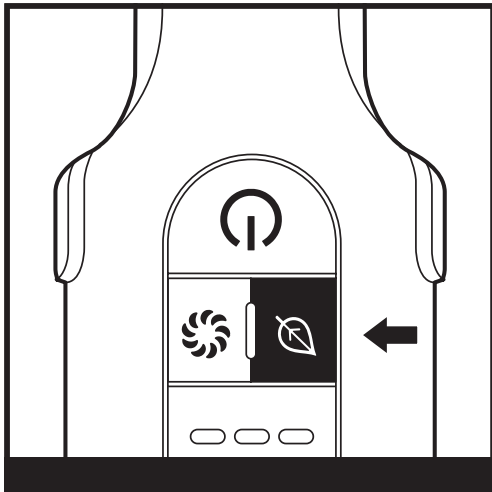
POWER

Press the **On/Off** button on the handle to turn on power. To turn off power, press the button again. (Normal mode)



BOOST MODE

For an added boost of power, press the **Boost** button. Press again to return to normal power.



Press the **ECO** button for noise reduction. Press again to return to normal power.

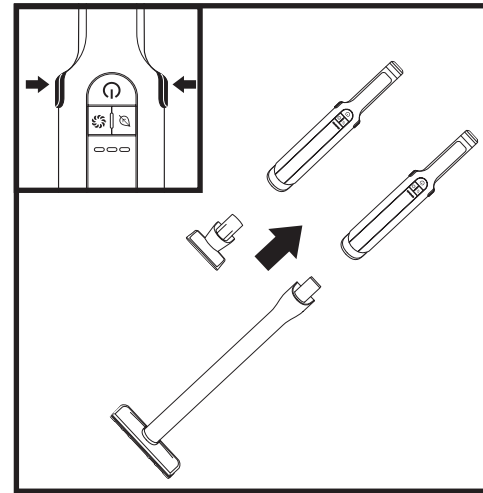


ACCESSORY RELEASE

To remove an accessory from the vacuum, press the **One-Touch Accessory Release** buttons on both sides of the handle, then pull out the accessory.

## USING ACCESSORIES

### ATTACH AND REMOVE ACCESSORIES



To attach an accessory to the vacuum, slide it into the opening in the nozzle. To remove, press one of the **One-Touch Accessory Release** buttons on either side of the handle, then pull out the accessory.

**NOTE:** Not all accessories come with all units. For a list of the accessories included with this model, see the "Includes" list on the box. To order additional accessories, visit [sharkclean.com.au](http://sharkclean.com.au) or [sharkclean.co.nz](http://sharkclean.co.nz)

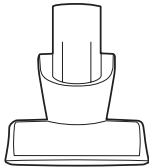
## ACCESSORIES

### USING ENCLOSED ACCESSORIES



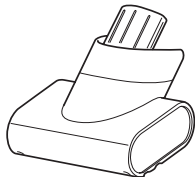
#### Duster Crevice Tool

Two cleaning tools in one. The crevice tool gives you extended reach to clean in tight spaces, while the soft brush is ideal for dusting delicate surfaces.



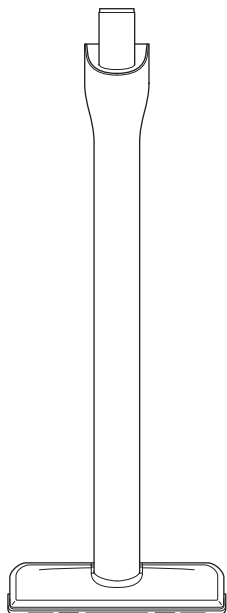
#### Upholstery Tool

Picks up pet hair, dust, and debris from furniture, curtains, and other delicate upholstered fabrics.



#### Motorised Hand Tool

Powered by a motor, this small brush removes the clingiest pet hair and extracts dirt, dust, dander, and allergens from deep inside pillows, upholstery, and carpets.

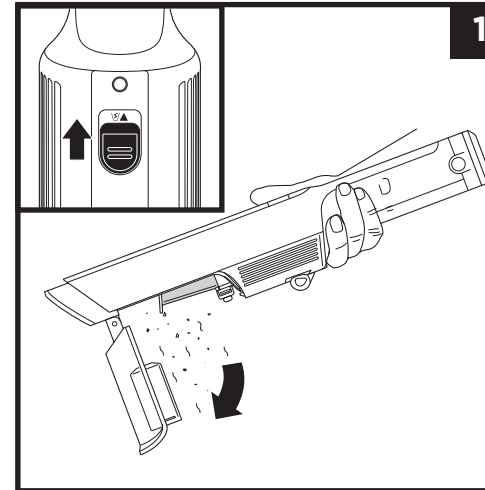


#### Floor Nozzle Tool

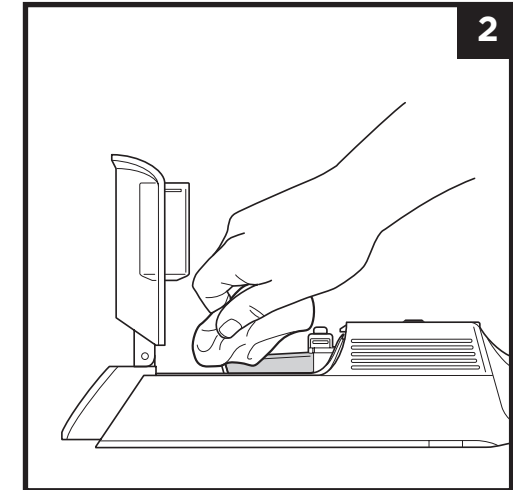
This detachable accessory is great for quick debris cleanup on hard floor surfaces.

## MAINTAINING YOUR VACUUM

### EMPTYING THE DUST CUP

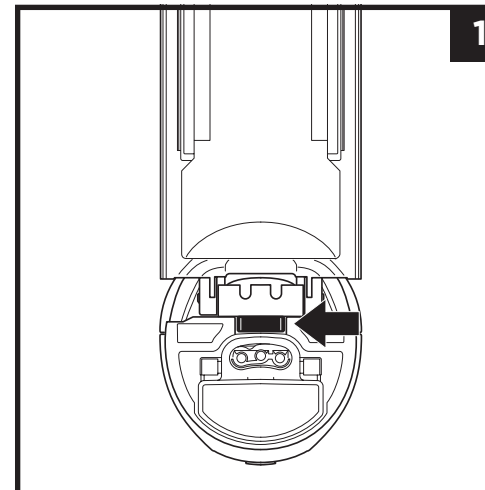


1. With the power off, slide the **Dust Cup** release button on the back of the vacuum towards you, and the dust cup will drop open.

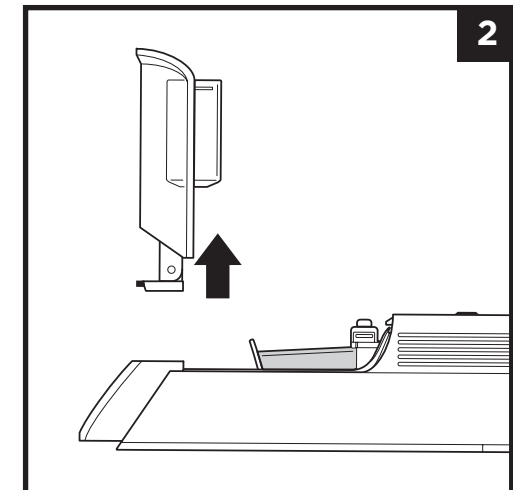


2. Wipe the screen inside the dust cup lightly with a dry cloth to remove dust and dirt.

### CLEANING THE DUST CUP



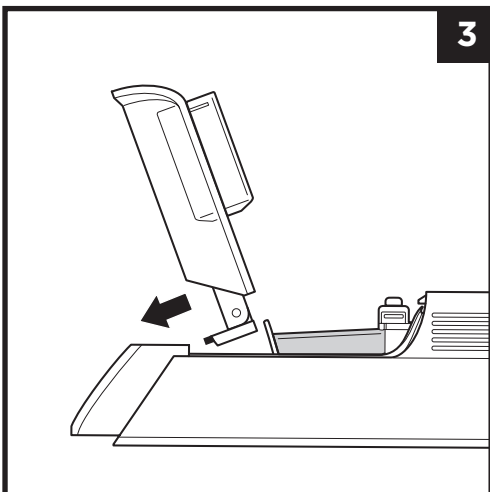
1. With the power off and the dust cup open, push the release button.



2. While holding in the button, lift off the dust cup, then hand-wash it with soap and water only. Let parts air-dry fully before reinstalling.

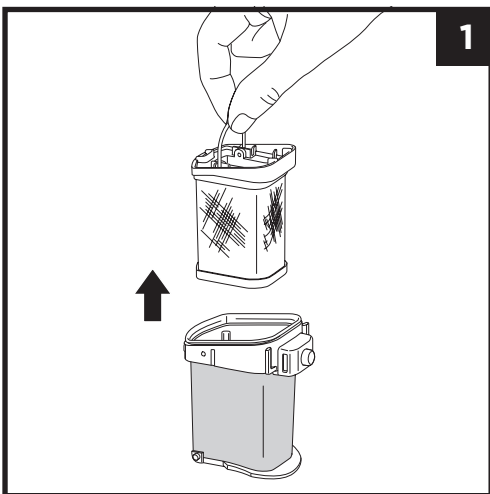
**NOTE:** Do not wash any parts or accessories in a dishwasher.

CLEANING THE DUST CUP (CONTINUED FROM PREVIOUS PAGE)



3. To reinstall, slide the tab on the dust cup into the slot on the bottom of the nozzle until it clicks into place.

CLEANING THE FILTER



1. Over a trash can lift the fabric filter by the metal ring to remove it from the housing, tap lightly to remove any dust and debris, then rinse with water only. Let the filter air-dry fully before reinstalling.

TROUBLESHOOTING

**⚠ WARNING: To reduce the risk of shock and unintended operation, turn off power and remove the battery before servicing.**

**Vacuum turns off on its own.**

There are several possible reasons for the vacuum turning off on its own, including blockages, battery issues, and overheating. If vacuum turns off on its own, perform the following steps



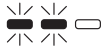

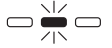

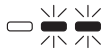
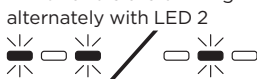
1. Turn on the vacuum and check the battery indicator lights on the hand vacuum. If recharging is needed, make sure vacuum power is off before plugging in the charger.
2. Empty dust cup and clean the filter. See the Emptying the Dust Cup and Cleaning the Filter sections for more information.
3. Check wand, accessories, and inlet openings and remove any blockages.
4. Allow unit and battery to cool for at least 45 minutes, until they return to room temperature.
5. Press the On/Off switch to restart the vacuum.

**Vacuum is not picking up debris. No suction or light suction.**

- Dust cup may be full; empty dust cup.
- Check floor nozzle for blockages; clear blockages if required.
- Remove any string, carpet fibres, or hair that may be wrapped around the brushroll; clear blockages if required.
- Check filters to see if they need cleaning. See the Cleaning the Filter section for more information.

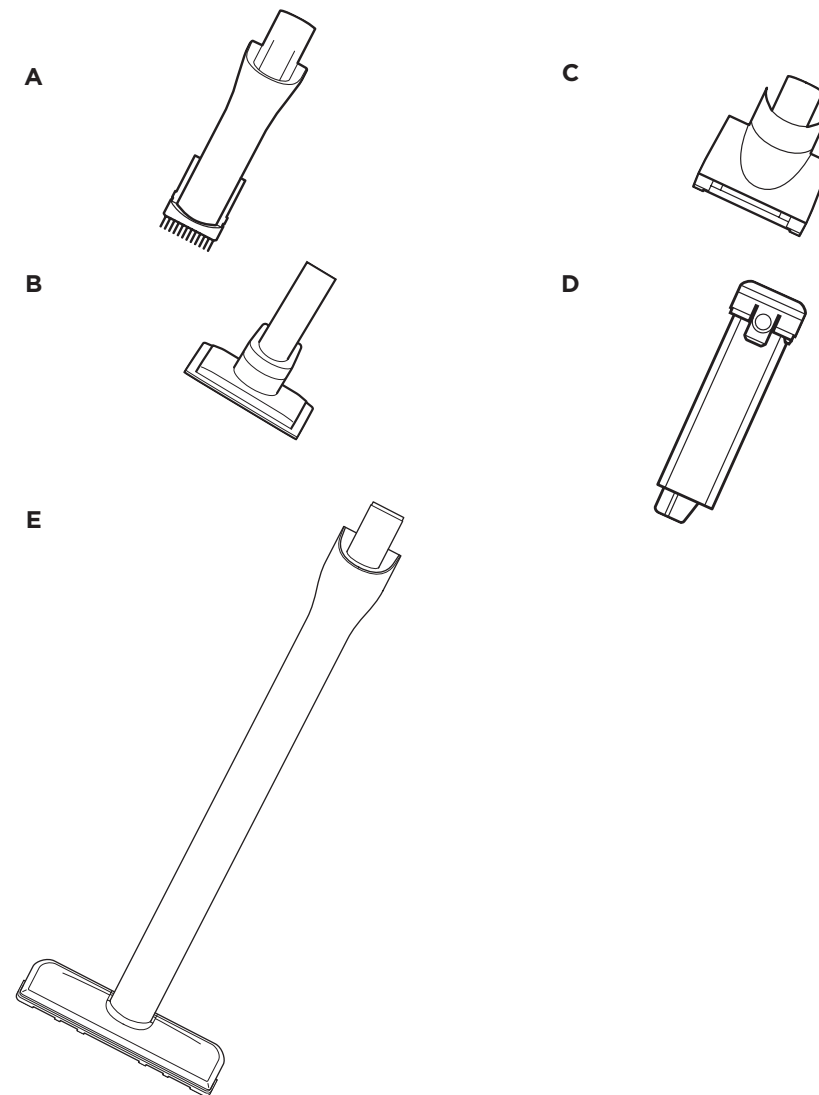
**TROUBLESHOOTING (CONTINUED FROM PREVIOUS PAGE)**

LED indicator error codes:

ERROR CODE	WHAT IT MEANS:	WHAT TO DO:
All 3 LED indicator lights are blinking 	The battery is not properly inserted in the vacuum cleaner.	If possible, try another battery. Insert the battery until it clicks, sliding it into the vacuum cleaner body. If the problem persists, please contact Customer Service.
LEDs 1 and 3 are blinking 	Motor is overheating.	Allow the vacuum cleaner and battery to cool to room temperature for about 45 minutes.
LEDs 1 and 2 are blinking 	Overcurrent or short.	Turn off the power, remove any clogging dust, and then turn on the power again.
Top LED is blinking 	Battery needs to be charged.	Place the vacuum cleaner on the charging dock to charge it.
LED 2 is blinking 	Overspeed.	Turn off the power, remove any clogs, and then turn on the power again. If the problem persists, please contact Customer Service.
LED 3 is blinking 	Communication.	Contact Customer Service.
LEDs 2 and 3 are blinking 	The charging dock may be defective.	Please use the included genuine charging dock. If the problem persists, please contact Customer Service.
LEDs 1 and 3 are blinking alternately with LED 2 	The filter may not be installed correctly.	Tilt the filter housing up and remove the fabric filter by pulling on the wire handle. Reinstall the filter by sliding it back into the housing, then press the housing firmly into place. Close the dust cup door, pressing it until it clicks into place. If the problem persists, please contact Customer Service.

**NOTE:** If vacuum still does not operate properly, contact customer support.

- A** Duster Crevice Tool
- B** Upholstery Tool
- C** Motorised Hand Tool
- D** Replacement Battery
- E** Floor Nozzle Tool



**NOTE:** To order replacement parts and additional accessories, visit [sharkclean.com.au](http://sharkclean.com.au) or [sharkclean.co.nz](http://sharkclean.co.nz)



## REGISTER YOUR PURCHASE



sharkclean.com.au



sharkclean.co.nz



## RECORD THIS INFORMATION

Model Number: \_\_\_\_\_

Date Code: \_\_\_\_\_

Date of Purchase: \_\_\_\_\_  
(Keep receipt)

Store of Purchase: \_\_\_\_\_

**TIP:** You can find the model and serial numbers on the QR code label on the bottom of the back of the hand vacuum and battery.

## TECHNICAL SPECIFICATIONS

Voltage: 14.4V

### BATTERY REMOVAL AND DISPOSAL

**This product uses a lithium-ion rechargeable and recyclable battery. When the battery no longer holds a charge, it should be removed from the vacuum and recycled. DO NOT incinerate or compost the battery.**

When your lithium-ion battery needs to be replaced, dispose of it or recycle it in accordance with local ordinances or regulations. In some areas, it is illegal to place spent lithium-ion batteries in the trash or in a municipal solid waste stream. Return spent battery to an authorised recycling centre or to retailer for recycling. Contact your local recycling centre for information on where to drop off the spent battery.

# Mann&Noble

**LIMITED WARRANTY • VACUUM: TWO (2) YEARS • BATTERY: ONE (1) YEAR**

The warranty commences on the date of purchase and expires at the end of the two-year period. In the unlikely event of a defect due to faulty materials or workmanship within the guarantee period we will replace the defective/faulty part with a new product, free of charge, or if the unit is deemed defective/faulty we replace the unit with an equivalent or upgraded model, at our discretion.

For warranty claims, you will need to submit a proof of purchase in the form of a valid receipt that displays date and place of purchase.

### Your warranty is subject to the following conditions

- DO NOT operate the appliance with a damaged plug or cord, or if the unit has been dropped, damaged or dropped in water.
- To avoid the risk of electric shock, do not disassemble or attempt to repair the appliance on your own. If the supply cord is damaged, it must be replaced by a qualified electrician to avoid a hazard. Incorrect re-assembly or repair can cause a risk of electric shock or injury to persons when the appliance is used.
- The item has not been misused, abused, neglected, altered, modified or repaired by anyone.
- The item has been subjected to fair wear and tear.
- The item has not been used for trade, professional or hire purposes.
- The item has not sustained damage through foreign objects, substances or accident

### Customer costs within warranty

The customer is responsible for any inwards freight charge to return a product for warranty if requested, and outward freight charge for warranty parts and or replacement unit.

### Who is covered?

This warranty applies only to the original purchaser, who bought the product from an authorised retailer and may not be transferred. Proof of purchase is required.

### What is not covered?

- Filters and brush rolls
- Accessories supplied with the item.
- Components that are subject to natural wear and tear caused by normal use in accordance with operating instructions.
- Unauthorised/improper maintenance/handling or overload is excluded from this warranty.
- Accidental damage
- Damage as a result of use not in accordance with the rating plate
- Removal of blockages. If a blockage does occur please refer to the trouble shooting guide within your Shark Operating manual
- Use of parts and accessories that are not genuine Shark components

**NOTES**

**NOTES**

# Mann&Noble

## **Proudly distributed by**

Mann&Noble Pty Ltd  
Building D, 33 Quarry Road  
Erskine Park NSW 2759  
Australia

**AUS** 02 8801 7666

**NZ** 0800 112 660

## **Visit us at:**

[sharkclean.com.au](http://sharkclean.com.au)

[sharkclean.co.nz](http://sharkclean.co.nz)

## **PLEASE READ CAREFULLY AND KEEP FOR FUTURE REFERENCE.**

This Owner's Guide is designed to help you get a complete understanding of your new Shark® vacuum.

Illustrations may differ from actual product. We are constantly striving to improve our products; therefore the specifications contained herein are subject to change without notice.

This product may be covered by one or more U.S. patents. See [sharkninja.com/patents](http://sharkninja.com/patents) for more information.

---

© 2021 SharkNinja Operating LLC. SHARK is a registered trademark of SharkNinja Operating LLC. WANDVAC is a trademark of SharkNinja Operating LLC.

WV406ANZ\_IB\_E\_EB1\_Mv7  
PRINTED IN CHINA



[@sharkcleanAPAC](https://www.instagram.com/sharkcleanAPAC)